

# Champaign Health District

Influenza Surveillance Report

Week 43

October 23-29, 2011

# Local Flu Activity as reported by Sentinel Providers

## **Week 42: October 16-22, 2011**

- No Influenza-Like Illness seen
- 187 total patients seen

## **Week 41: October 9-15, 2011**

- 1 Influenza-Like Illness seen
- 193 total patients seen

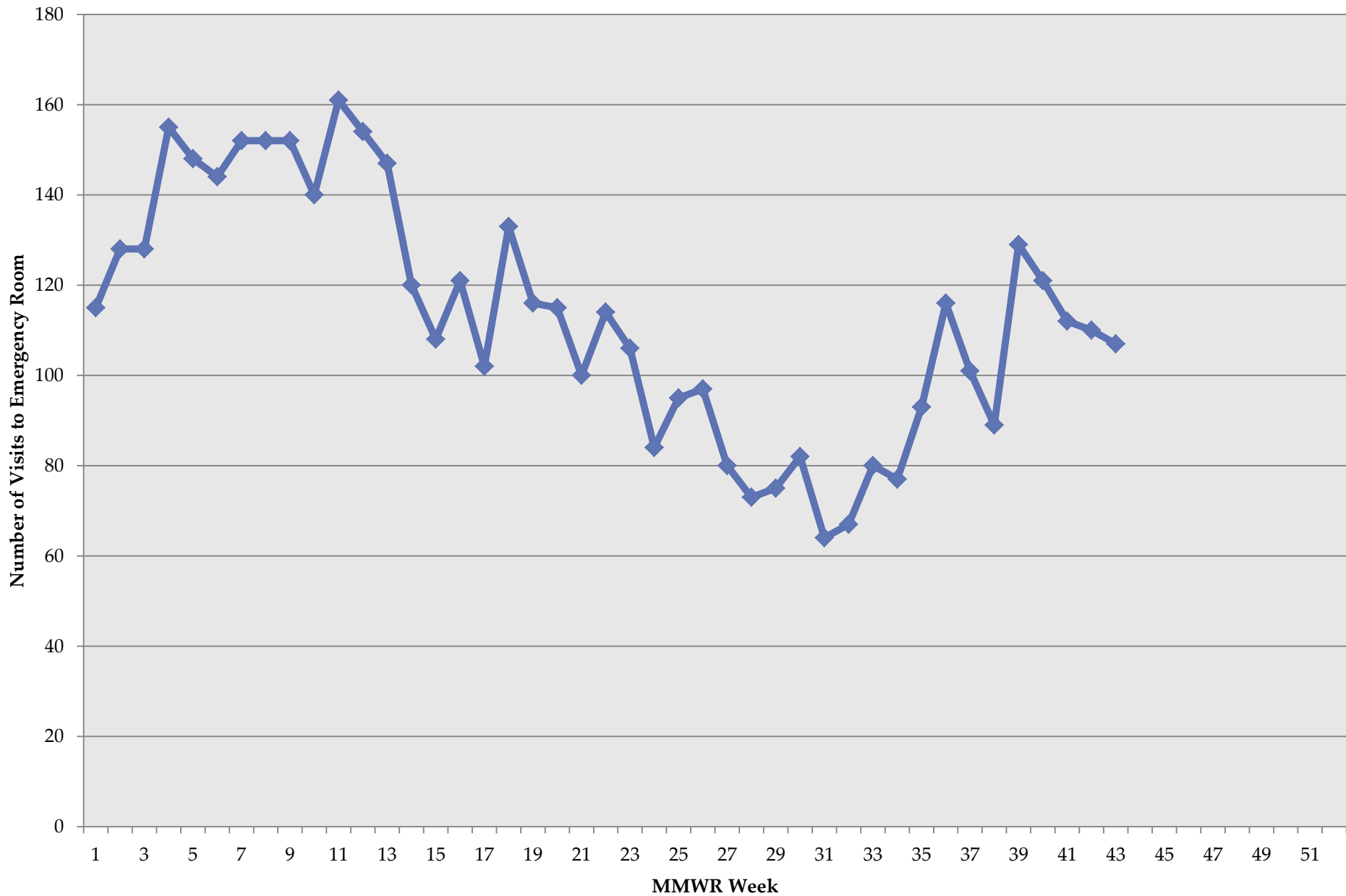
## **Week 40: October 2-8, 2011**

- No Influenza-Like Illness seen
- 105 total patients seen

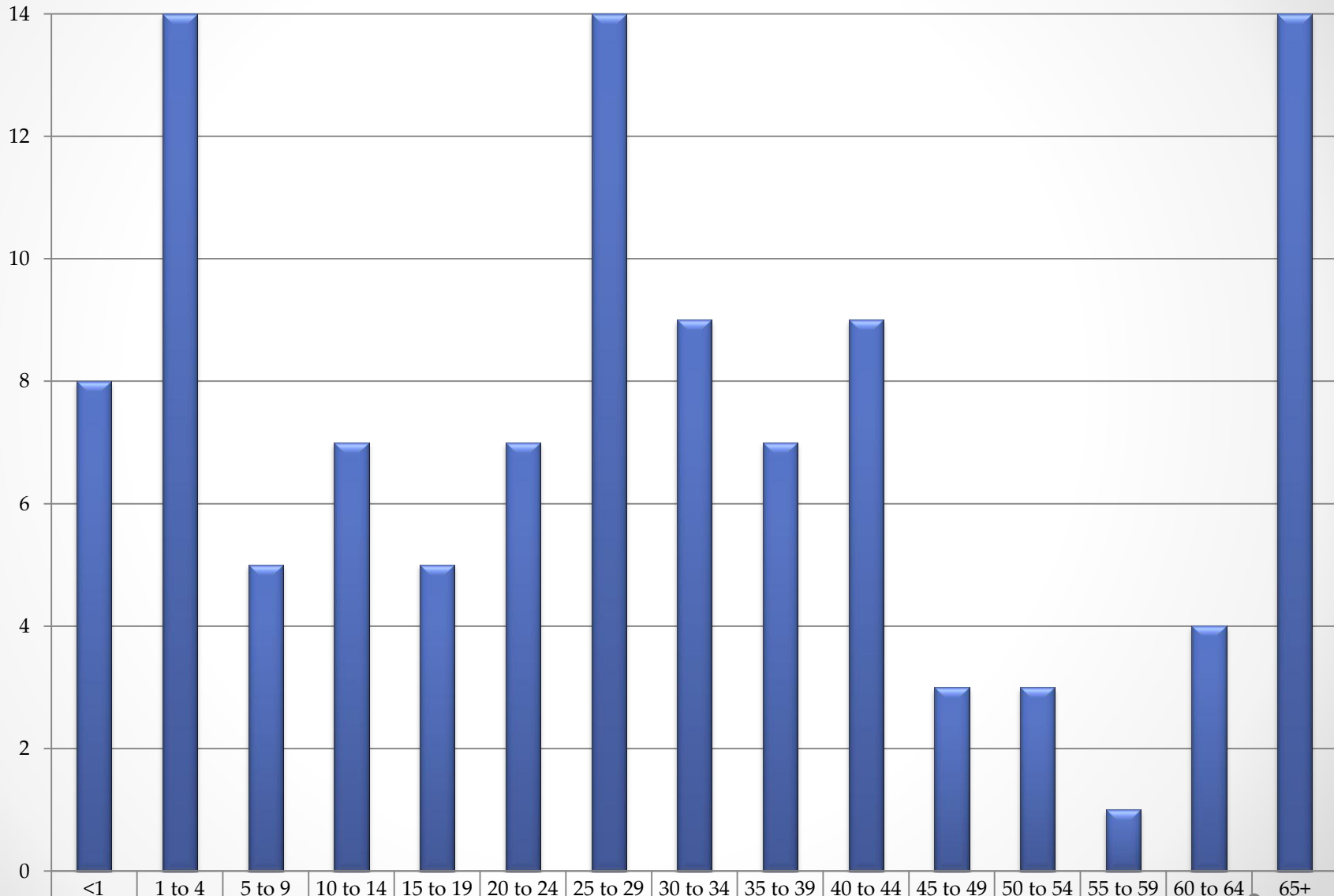
## **US Influenza Statistics for week 40 (October 2-8, 2011)**

- Low influenza activity in US- none in Ohio
- Specimens tested: 1,479
  - 12 positive for influenza
    - 2 Influenza B
    - 10 Influenza A

# Visits to ER for Influenza Like Illness by MMWR Week in Champaign County



# Number of ER visits for Influenza Like Illness by Age Group In Champaign County October 23-29, 2011: MMWR Week 43



Number of Visits

<1 1 to 4 5 to 9 10 to 14 15 to 19 20 to 24 25 to 29 30 to 34 35 to 39 40 to 44 45 to 49 50 to 54 55 to 59 60 to 64 65+

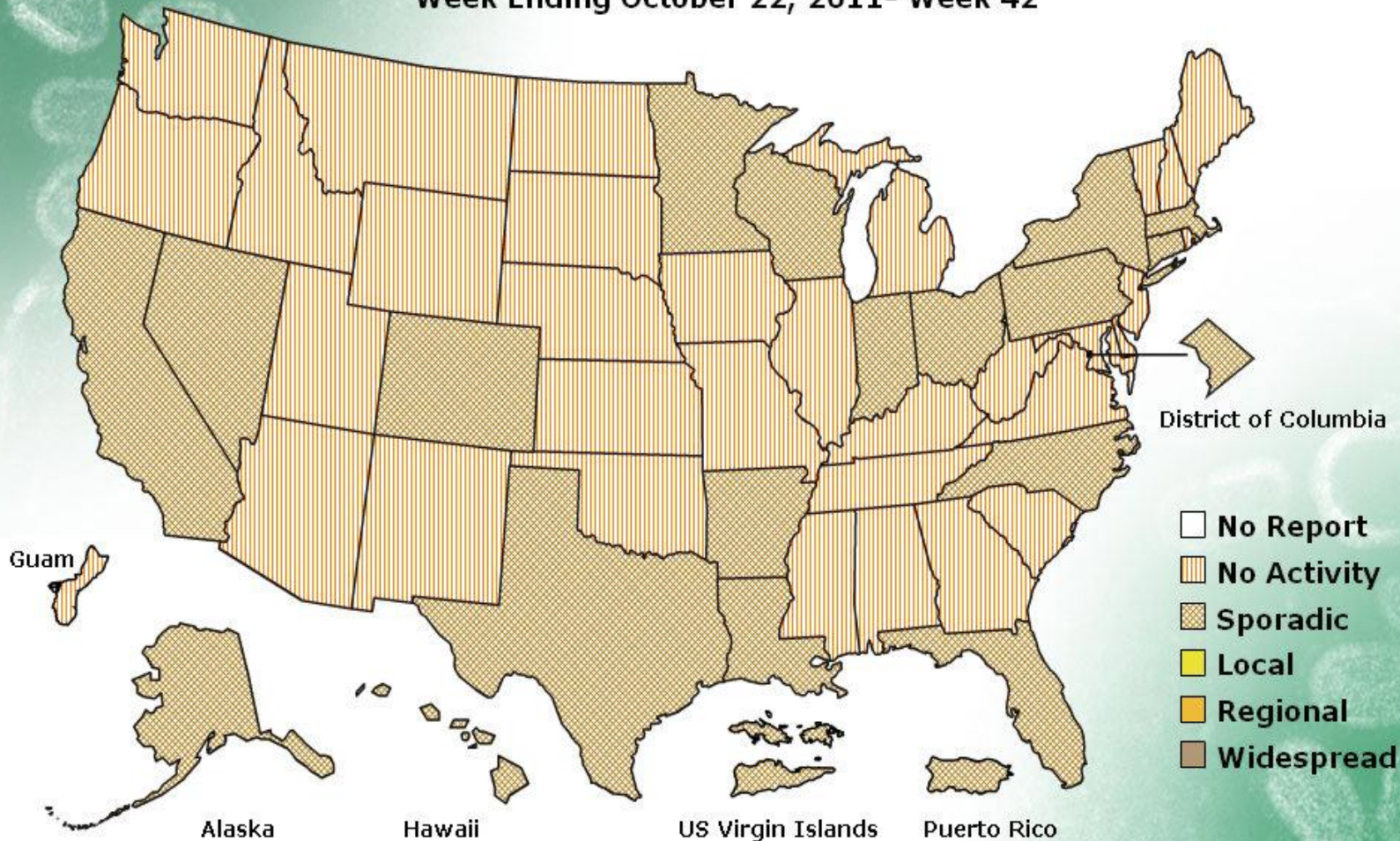
8 14 5 7 5 7 14 9 7 9 3 3 1 4 14

# FLUVIEW



**A Weekly Influenza Surveillance Report Prepared by the Influenza Division**  
**Weekly Influenza Activity Estimates Reported by State and Territorial Epidemiologists\***

**Week Ending October 22, 2011- Week 42**



\*This map indicates geographic spread and does not measure the severity of influenza activity.

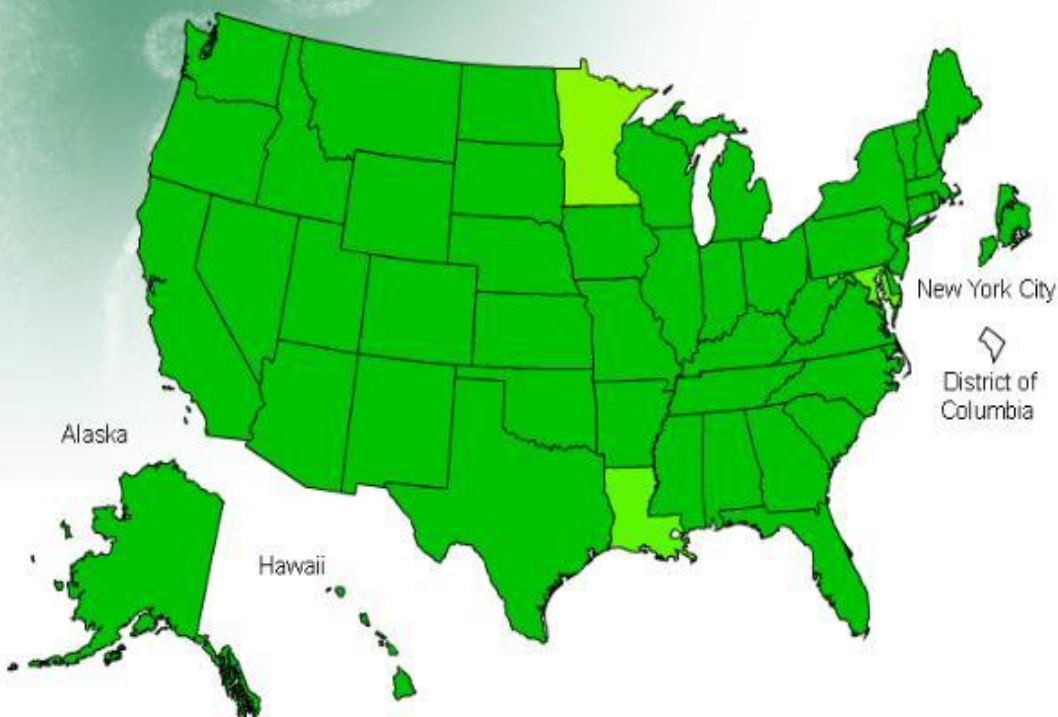
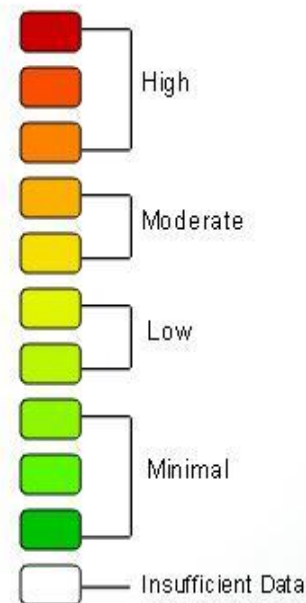
# FLUVIEW



A Weekly Influenza Surveillance Report Prepared by the Influenza Division  
Influenza-Like Illness (ILI) Activity Level Indicator Determined by Data Reported to ILINet

2011-12 Influenza Season Week 42 ending Oct 22, 2011

## ILI Activity Level



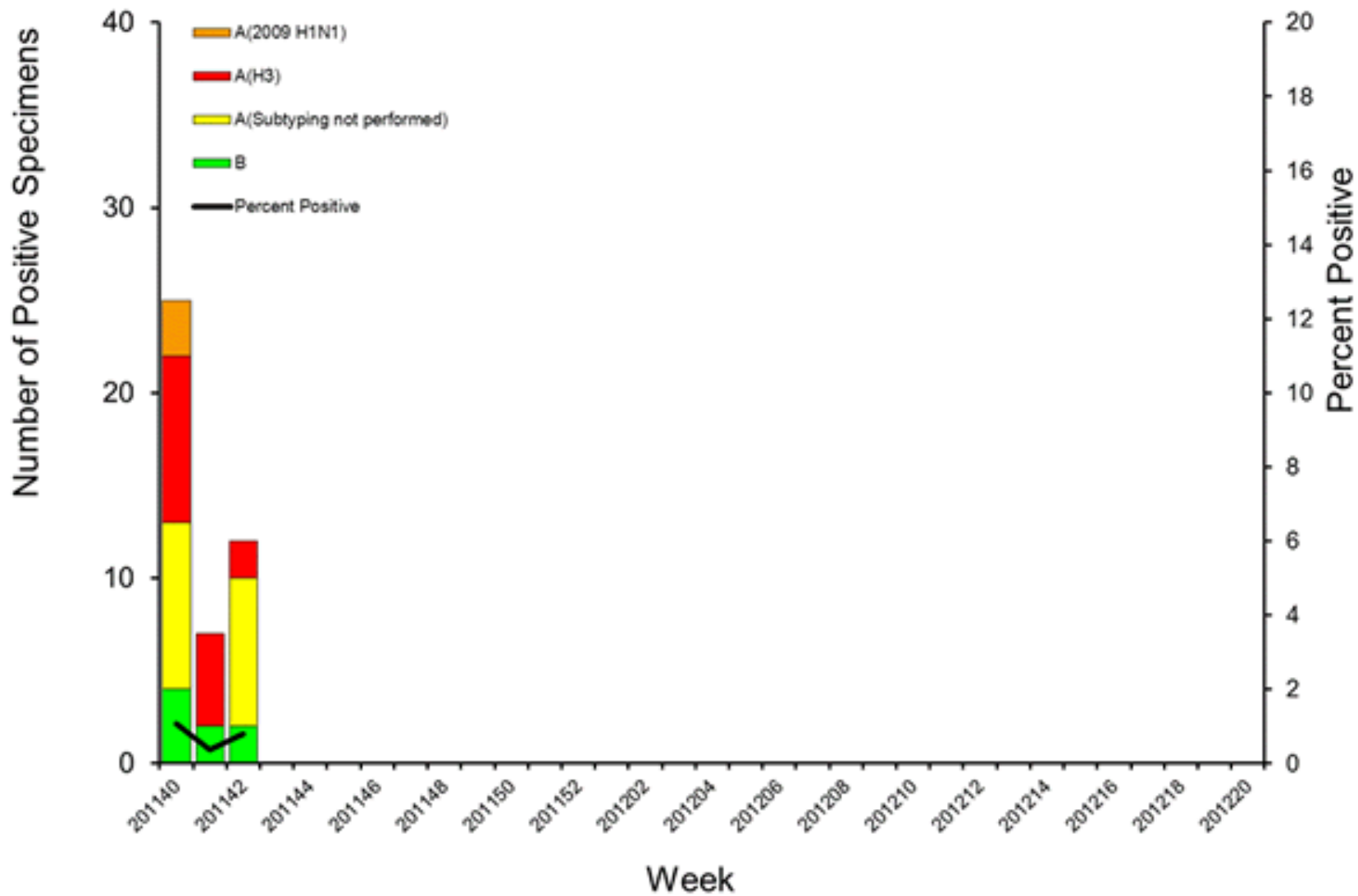
\*This map uses the proportion of outpatient visits to healthcare providers for influenza-like illness to measure the ILI activity level within a state. It does not, however, measure the extent of geographic spread of flu within a state. Therefore, outbreaks occurring in a single city could cause the state to display high activity levels.

\*Data collected in ILINet may disproportionately represent certain populations within a state, and therefore may not accurately depict the full picture of influenza activity for the whole state.

\*Data displayed in this map are based on data collected in ILINet, whereas the State and Territorial flu activity map are based on reports from state and territorial epidemiologists. The data presented in this map is preliminary and may change as more data is received.

\*Differences in the data presented by CDC and state health departments likely represent differing levels of data completeness with data presented by the state likely being the more complete.

# Influenza Positive Tests Reported to CDC by U.S. WHO/NREVSS Collaborating Laboratories, National Summary, 2011-12



## Number of Influenza-Associated Pediatric Deaths by Week of Death: 2008-09 season to present

