

Champaign Health District

Influenza Surveillance Report

Week 1

January 1-7, 2012

Local Flu Activity as reported by Sentinel Providers

Week 1: January 1-7, 2012

- No Influenza-Like Illness seen
- 137 total patients seen

Week 52: December 25- 31, 2011

- No Influenza-Like Illness seen
- 150 total patients seen

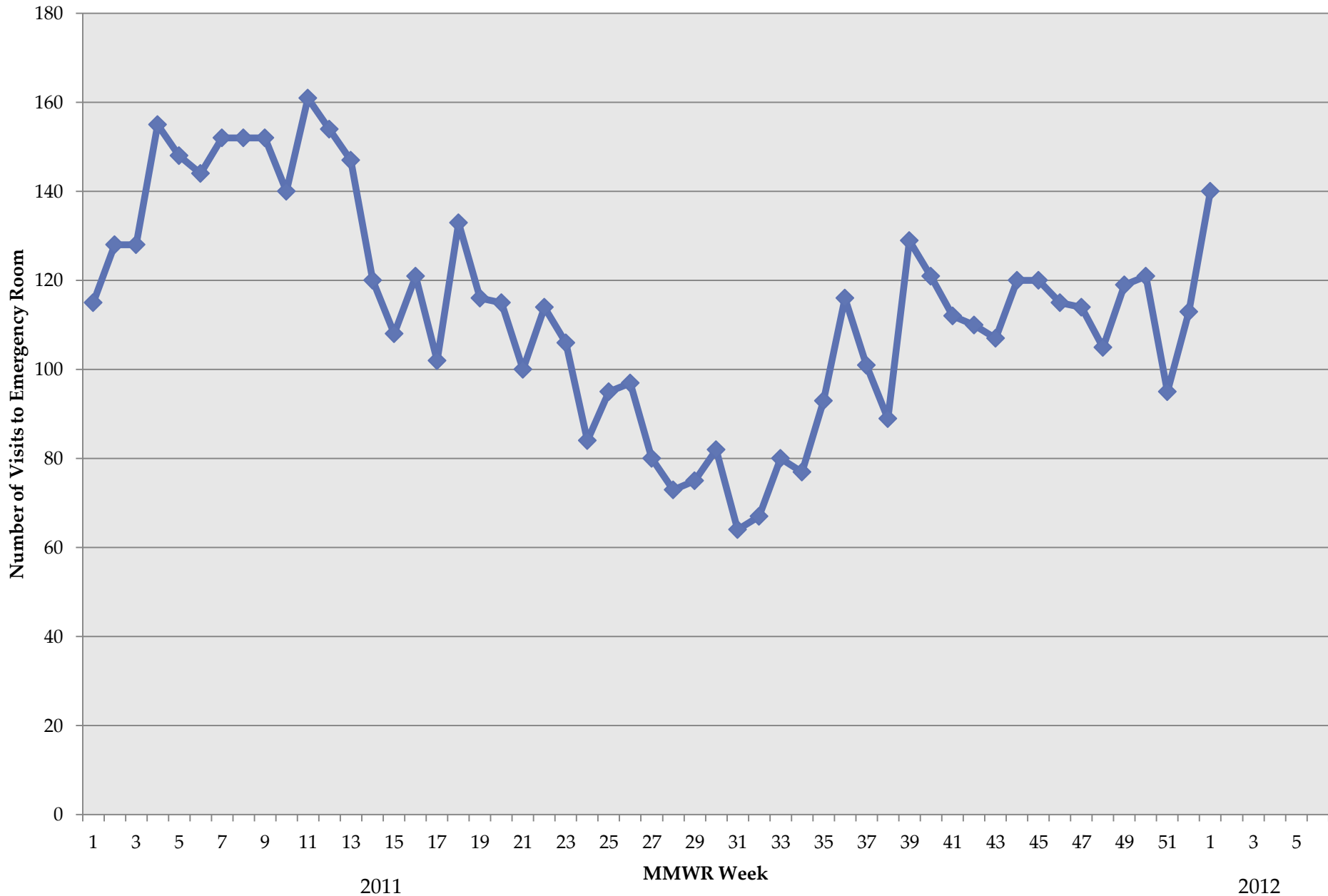
Week 51: December 18-24, 2011

- No Influenza-Like Illness seen
- 197 total patients seen

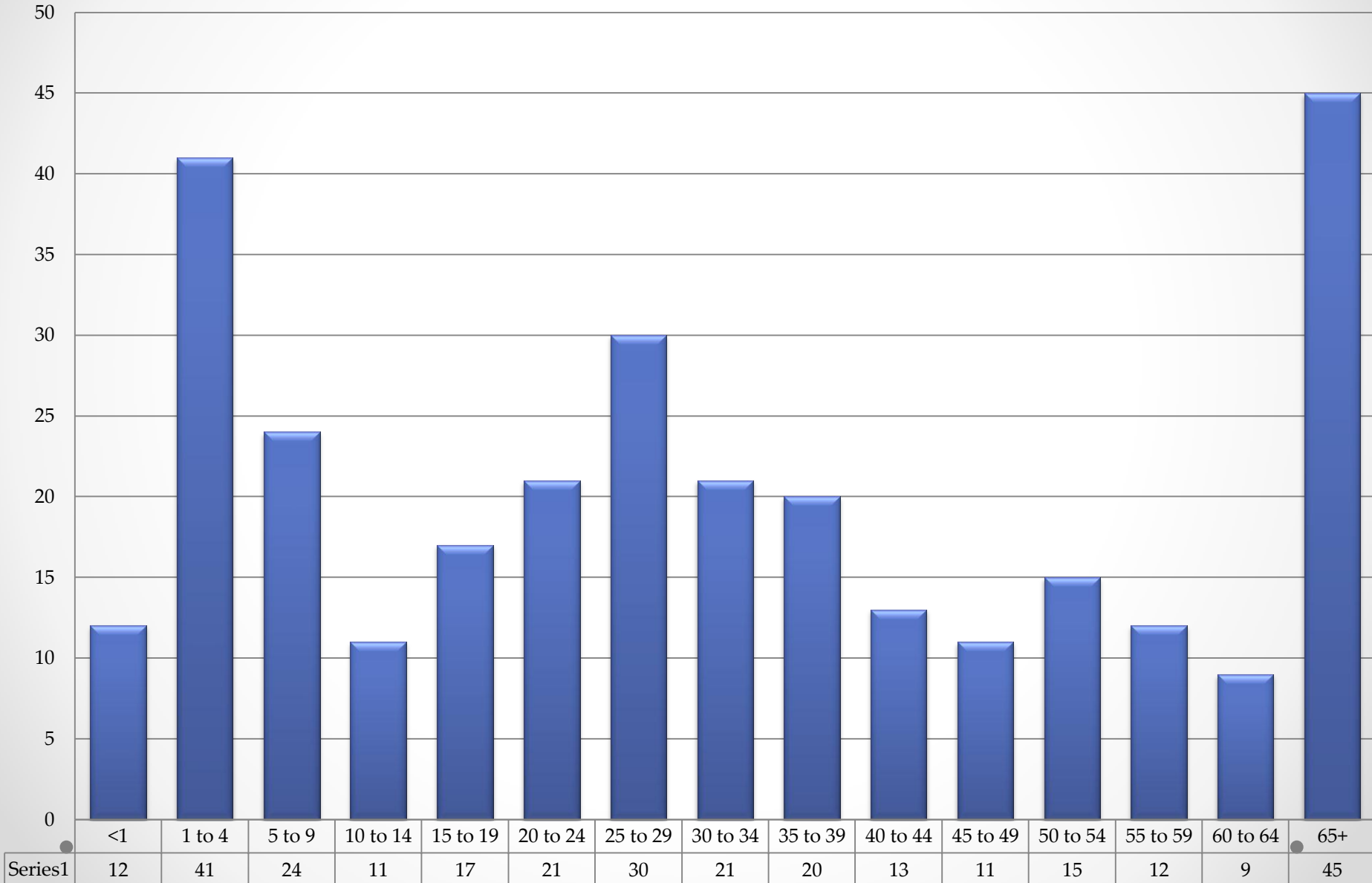
US Influenza Statistics for week 1 (January 1-7, 2012)

- Low influenza activity in US- Sporadic/ minimal activity in Ohio
- Specimens tested: 3,199
 - 108 positive for influenza
 - 6 Influenza B
 - 102 Influenza A

Visits to ER for Influenza Like Illness by MMWR Week in Champaign County



Number of ER visits for Influenza Like Illness by Age Group In Champaign County January 1-7, 2012: MMWR Week 1

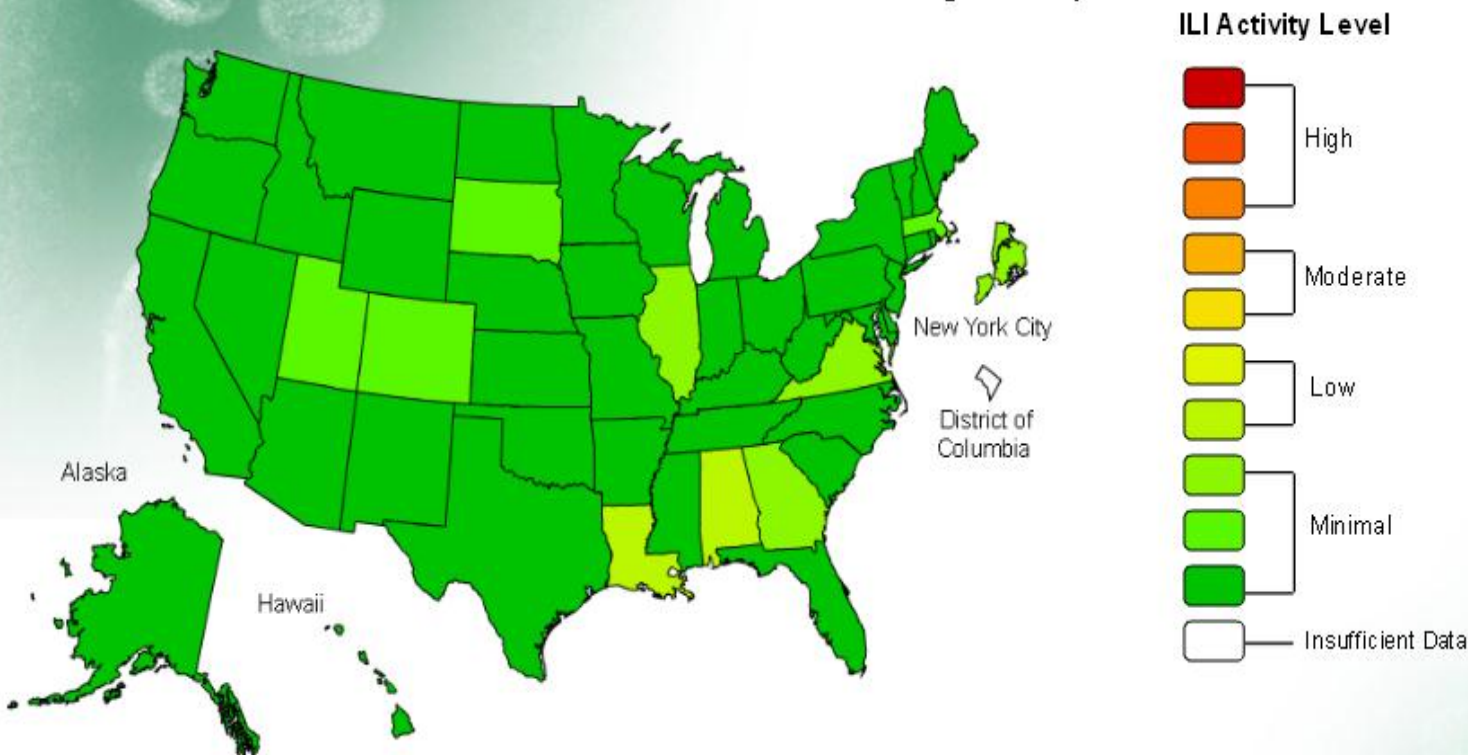


FLUVIEW



A Weekly Influenza Surveillance Report Prepared by the Influenza Division
Influenza-Like Illness (ILI) Activity Level Indicator Determined by Data Reported to ILINet

2011-12 Influenza Season Week 1 ending Jan 07, 2012



*This map uses the proportion of outpatient visits to healthcare providers for influenza-like illness to measure the ILI activity level within a state. It does not, however, measure the extent of geographic spread of flu within a state. Therefore, outbreaks occurring in a single city could cause the state to display high activity levels.

*Data collected in ILINet may disproportionately represent certain populations within a state, and therefore may not accurately depict the full picture of influenza activity for the whole state.

*Data displayed in this map are based on data collected in ILINet, whereas the State and Territorial flu activity map are based on reports from state and territorial epidemiologists. The data presented in this map is preliminary and may change as more data is received.

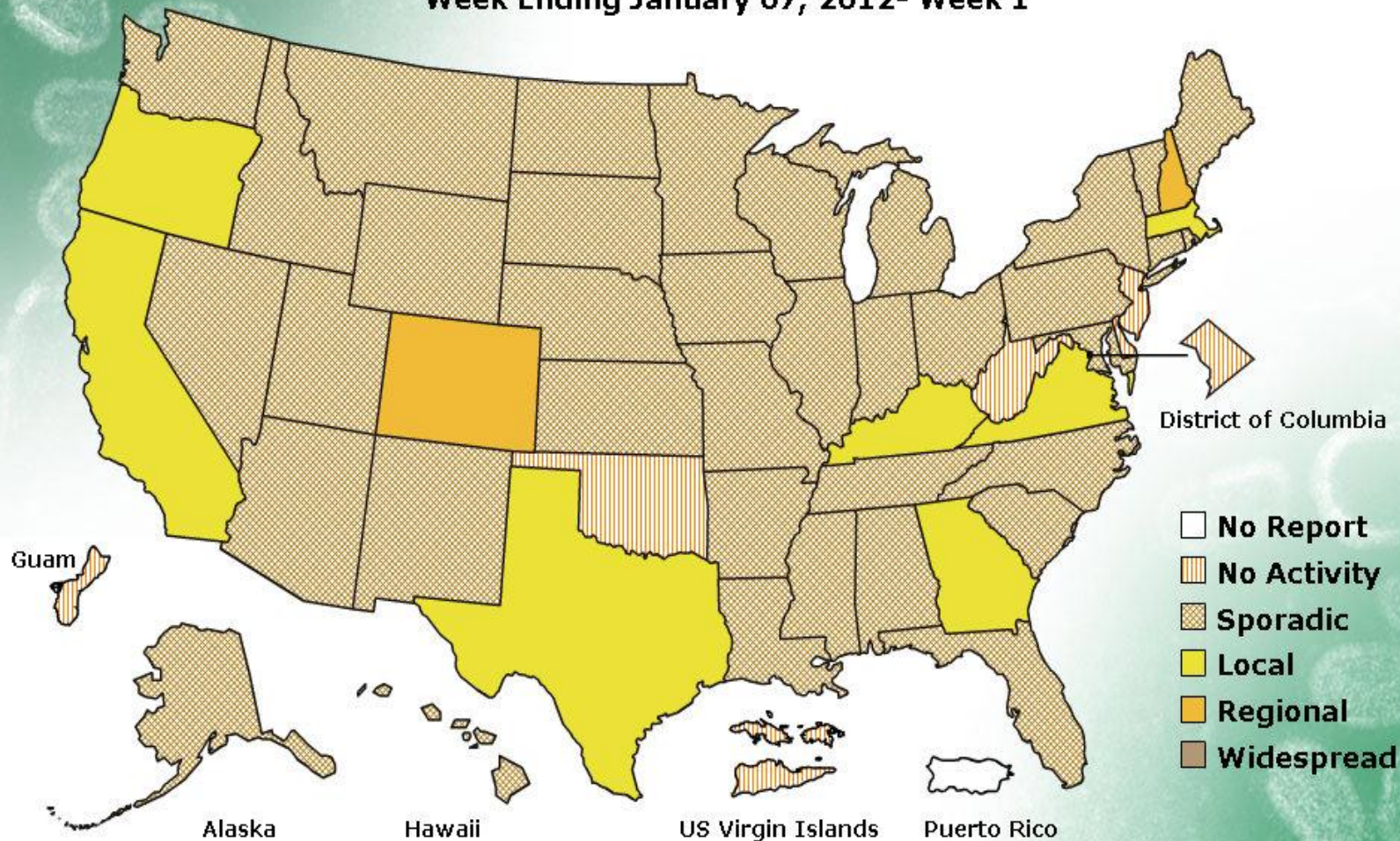
*Differences in the data presented by CDC and state health departments likely represent differing levels of data completeness with data presented by the state likely being the more complete.

FLUVIEW



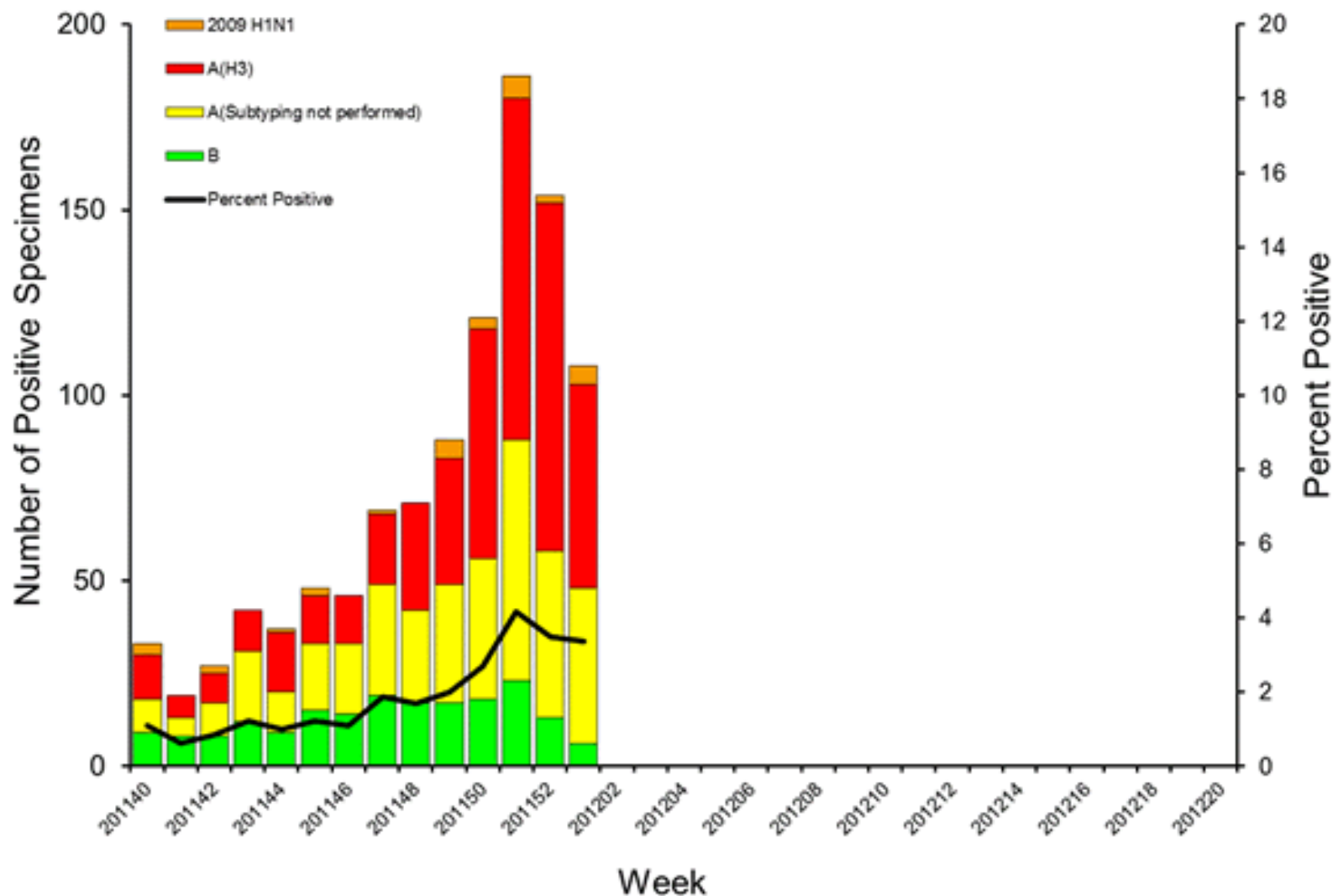
A Weekly Influenza Surveillance Report Prepared by the Influenza Division
Weekly Influenza Activity Estimates Reported by State and Territorial Epidemiologists*

Week Ending January 07, 2012- Week 1



*This map indicates geographic spread and does not measure the severity of influenza activity.

Influenza Positive Tests Reported to CDC by U.S. WHO/NREVSS Collaborating Laboratories, National Summary, 2011-12



Number of Influenza-Associated Pediatric Deaths by Week of Death: 2008-09 season to present

